



Oberammergau Passion Play 2010



The Bavarian Pilgrimage Pathways

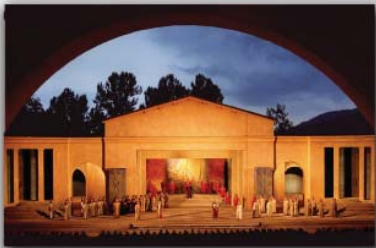
June 25–July 4, 2010

Hosted by The Reverend Matthew Corkern



About the Oberammergau Passion Play:

A Play of Life and Death, promised in a moment of mortal threat—so began the history of the Oberammergau Passion Play in 1633. In the midst of the horror of the 30 years' war, the dreaded plague swept across Europe. The citizens of Oberammergau attempted to seal themselves off from the outside world. When a homesick young man sneaked into the village and brought the disease with him, 84 residents died within 3 weeks. In desperation, Oberammergauers made a solemn vow that if God would stop the plague, out of gratitude, they would present a play depicting the life, suffering and Resurrection of Christ every 10 years for the duration of their existence. Miraculously the plague took no more lives in the village. True to their word, the villagers performed their first play at Pentecost in 1634, and have continued to do so to this day.



The Passion Play is performed every 10 years in the city of Oberammergau, Germany. The play takes place, in an open-air stage, where the sky and mountains are the back drop. More than 2,000 citizens make up the actors, singers, instrumentalist and stage technicians that bring the play to life. The year 2010 marks the 41st time the story will be presented in Oberammergau.

Friday, June 25

Day of Travel: The Journey

Depart Atlanta late in the afternoon on a transatlantic non-stop flight to Munich.

Saturday, June 26

Day of Conclave: The Gathering



Arrive at Munich International Airport early this morning. Visit the three churches at Bischofsmais St. Hermann in the middle of the Bavarian Forest. Travel the short distance to Wallhalla

for a guided tour. Built by King Ludwig I, this Doric temple was intended to honor all the great men in German history. Continue to Regensburg for dinner and overnight. (D)

Sunday, June 27

Day of Commitment: The Christ Proclaimed

Attend morning services at the late-Gothic cathedral, Dom St. Peter in Regensburg. Enjoy a private tour of St. Emmeram Castle, belonging to the princely family, Thurn und Taxis. The castle consists of an old abbey and its buildings, including a well-preserved gothic cloister. Regensburg is famous for its medieval architecture. The Steinerne Brücke (Bridge of Stone) arches over the Danube River and offers a breathtaking view of the city's Mediterranean atmosphere. Enjoy a Danube dinner cruise and overnight Regensburg. (B, L, D)

Monday, June 28

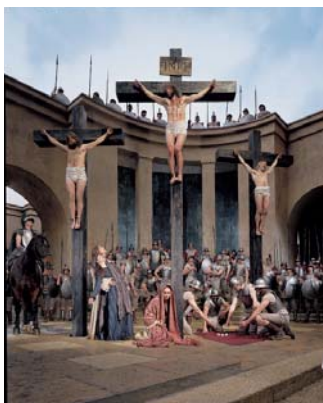
Day of Wandering: The Paths of Hope

Drive to Andechs Abbey, a Benedictine monastery among Bavaria's oldest sacred sites. Tour the Baroque church, the monastery, and the monastery brewery. Enjoy lunch at the Andechs tavern, famous for its brewed beer since 1455. The 20th century German composer Carl Orff is buried in the abbey chapel. Continue to Ettal for a guided tour of Ettal Abbey, renowned community of prayer, serenity and beauty. Dinner & lodging at Hotel 'Ludwig der Bayer' Ettal. (B, L, D)



Tuesday, June 29

Day of Contemplation: The Encounter



The morning is free to explore the village of Oberammergau. Participate in prayer at local churches in the village, enjoy the many beautifully painted houses with fairytale scenes and the shops of its excellent "Herrgottschnitzer" (woodcarvers specializing in religious figures). Lunch is at the Kloster Ettal. The Passion Play performance

begins after lunch at 2:30 in the afternoon. This Play is

performed by local villagers—roles are often handed down within families from generation to generation. Dinner is included during a three-hour break in the late afternoon from 5–8 pm, and the performance lasts until 10:30. Dinner and lodging at Hotel 'Ludwig der Bayer' Ettal. (B, L, D)

Wednesday, June 30

Day of Sanctuary: The Idyllic Peace

After breakfast join in morning prayer and reflections at Wieskirche (Church in a Meadow). This magnificent Pilgrimage Church of the Scourged Savior is known as one of the finest



examples of Rococo architecture in the world, (known as "Lord God's Ballroom"). The figure of the scourged Jesus is the source of miracles including tears in the eyes of the statue. As we travel to Neuschwanstein Castle, we cross the Marienbrücke Bridge; this incredible engineering feat grants breathtaking views across the Alpine heights and a spectacular view of the Castle. Tour Neuschwanstein Castle; built by the Mad King Ludwig II. This castle is the inspiration for Walt Disney's Cinderella's Castle. Lunch today is on your own at the castle. Continue to Munich for dinner and fellowship at the Hofbräuhaus. Overnight at Courtyard by Marriott in Munich. (B, D)

Thursday, July 1 Day of Chivalry: The Hospitality of Reconciliation

Spend the day in Munich, Germany's "secret capital" renowned both for its sacred and secular culture. Enjoy a city walking tour through the "City of Monks" and capital of Bavaria. Visit the Residenzmuseum, the Wittelsbach residence opened to the public in 1920, ranking among the finest palace museums in Europe. A separate ticket admits you to the Schatzkammer (treasure vault), filled with the Wittelsbachs' glittering crowns, jewelry, and knickknacks. Proceed to Frauenkirche (Church of Our Lady), Munich's soaring Gothic cathedral, for midday prayer and reflection. Enjoy lunch on your own as you explore the Marienplatz. Free time this afternoon to explore Munich on your own. Options: Visit the Deutsches Jagd-und Fischereimuseum (Hunting & Fishing Museum) to see German sportsmanship trophies, paintings and arms-collections. For those interested in cathedrals and architecture, visit Michaelskirche, the oldest Counter-Reformation church north of the Alps, with a lovely chapel with barrel vaulting. There are numerous art collections and museums spread across the city, more than enough to fill your free afternoon.

Watch the lively jousting and dancing figures of the Glockenspiel at 5 pm before driving through the leafy "English" park famous for picnics & beer gardens. Dinner at Seehaus im Englischen Garten. Overnight at the Courtyard by Marriott in Munich. (B, D)



Friday, July 2 Day of Experience: The Glory, Majesty and Beauty

Today is spent traveling through the sublimely beautiful Berchtesgaden National Park with local experts, David & Christine Harper. Visit the Dokumentationszentrum Obersalzberg, a multilingual, multimedia exhibition of Nazi influences and insanity. Continue to Kehlsteinhaus (Eagle's Nest), built for Hitler's 50th Birthday by Martin Bormann as a place of retreat and to entertain visiting dignitaries. Lunch at Berchtesgaden. Relax on a boat-trip on fjord-like Königsee Lake, one of Bavaria's most romantic sites. Renew Baptismal vows in the red onion-domed pilgrimage Chapel of St. Bartholoma, once the home of a monastery turned hunting lodge of the royal family. Return to Munich for dinner on your own and a free evening. Overnight at the Courtyard by Marriott. (B, L)



Saturday, July 3 Day of Exploration: The Pilgrim Heart

After breakfast, visit Altötting, one of the most revered places of pilgrimage in Germany. A spiritual center since 876, its fame came in 1489 when according to legend a boy was resurrected by the BVM in the Chapel of Mercy. Also known as "the heart of Bavaria," a sacred place where the hearts of the rulers of Bavaria are placed in silver urns lining the chapel. Pope Benedict XVI, who was born nearby in the town of Marktl, is closely connected to Altötting through his numerous official and private visits. Participate in prayers shared with countless witnesses in Stiftskirche and Basilika. Lunch is on your own today. Continue to the Schloss Nymphenburg and marvel at the striking symmetry of this royal summer residence. Pray in the Chapel of the Bavarian Royal Family. Tonight's Farewell Dinner will be at Restaurant 181 Olympic Tower. Overnight once again at the Courtyard by Marriott. (B, D)

Sunday, July 4 Day of Return: The Departure

Depart Munich this morning. Pilgrims return HOME!

For more information, contact:

The Reverend Matthew Corkern
Trinity Episcopal Church
1900 Dauphin Street
Mobile, AL 36606
rector@trinitymobile.org

Travel Arrangements by:



124 E. Main St., 4th Fl.
Ephrata, PA 17522
(717) 721-7307
(800) 418-2929 Ext. 81307
lindyw@mtstravel.com

Land Only Tour Price, based on double occupancy: \$4,595

* Single Room Supplement: \$375

Group Travel Insurance (optional): \$390 (nonrefundable)

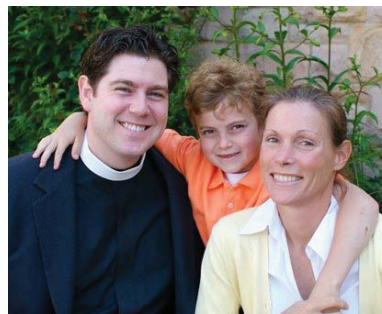
This tour price reflects special group rates. Deposits received after March 15, 2010, will likely incur additional charges due to supplier contract terms.

** Single rooms for the two nights in Oberammergau are available on a very limited basis and cannot be guaranteed. Therefore, you may be required to share a room for these two nights or pay an additional supplement for a single room in Oberammergau.*

Land Only Tour Price includes:

- Accommodations listed in itinerary, or similar
- Breakfast (B), Lunch (L) and Dinner (D) as indicated in itinerary: 8/8 Breakfasts, 4/8 Lunches, 7/8 Dinners
- Oberammergau Passion Play ticket package, including free admission to the Oberammergau Museum and English program textbook
- Sightseeing & entrance fees to sites listed in itinerary
- Pilgrimage leader and chaplain
- Professional Tour Director throughout
- Driver and transportation in air-conditioned motor coach
- Hotel service charges and local taxes
- Tips to guide, driver and hotel staff
- Every Pilgrim's Guide to Oberammergau
- *Father Corkern's Pilgrim Guide to Germany*

Meet Your Host...



Father Matthew Corkern was ordained to the priesthood through the Diocese of Virginia. While serving as seminarian-intern at St. Mark's Episcopal Church in New Canaan, Connecticut, he started a pilgrimage series for

clergy and laity at Berkeley Divinity School at Yale. This pilgrimage ministry continues through retreats and pilgrimages at home and abroad to the Holy Land, Europe, and South Africa. Join Father Corkern as he leads this spiritual pilgrimage exploring the Art, Architecture, and Faith across southern Germany, including the Oberammergau Passion Play.

Matthew and his wife, Alice, have one son, Preston. He serves as Rector at Trinity Episcopal Church of Mobile, Alabama.

Tour Features and Conditions

NOTE: All rates and fares are based on prices and currency exchange rates in effect at the time of printing (December 2009) and are subject to change prior to final payment. Additional fees will be charged for individual deviations from the group itinerary. Tour price is based on a minimum of 15 persons traveling together.

Please read all Tour Features and Conditions carefully. Payment of tour deposit constitutes acceptance of these conditions.

Accommodations: Based on two persons sharing a room in accommodations listed in itinerary, or similar, with private facilities, including service charges and taxes. Single rooms in Oberammergau are extremely limited and are available on request only. Triple rates are not available. *If a passenger cannot supply a roommate, the passenger is responsible for the additional charge.*

Meals: In-flight meals and snacks are served according to airline policy. Meals as indicated by B=Breakfast, L=Lunch, D=Dinner. Opportunity will be given for meals that are not included to be secured by tour members, at their own expense. Beverages with meals are not included.

Transfers and Baggage: Transfers between airports and hotels upon arrival and departure are included in the tour price, including handling of one medium-sized suitcase per person, not exceeding 62 dimensional inches (length plus width plus height) or weighing more than a maximum of 50 pounds. *Due to limited luggage storage space on motorcoaches, it is important that each person bring only ONE piece of checked baggage. In addition, a flight bag or overnight case may be taken, which must be handled by the passenger at all times. Baggage allowance is subject to change according to airline policy.*

Sightseeing and Entrance Fees: Included as shown in itinerary with English-speaking Tour Manager and including entrance fees where applicable.

Tips and Taxes: Service charges and taxes on accommodations are included. Tips to guides, drivers, and hotel staff are included. Tips for personal services are not included and are at tour member's own expense.

Not Included: Passport fee, travel protection insurance, most lunches, beverages with lunches and dinners, airport portage in the U.S., and expenses of a purely personal nature are not included.

Deposit and Payment: A deposit of \$1000 (non-refundable) per person is required for enrollment on this tour. A second deposit of \$1000 (non-refundable) plus a copy of your passport is due on February 15, 2010. If you do not have a passport, please send a copy to MTS TRAVEL once you receive your passport. Final payment of the outstanding balance is due 100 days prior to departure. Checks should be made payable to MTS TRAVEL. You will be invoiced for the additional deposits and the final payment.

MTS Cancellation Conditions: Cancellation after enrollment will result in a penalty of \$1000 per person. Any cancellations received within 100 days of departure will incur a maximum of 100% of the tour price, depending on charges imposed by airlines, hotels and the ability to re-sell the Passion Play tickets and accommodations. Cancellations are required in writing by letter, fax or email.

Protect Your Investment: MTS TRAVEL strongly recommends purchasing this primary insurance coverage. If you purchase the protection plan upon enrollment with your deposit, any restriction on pre-existing conditions is waived. If protection plan is purchased after the deposit is received, all coverage is subject to exclusion of pre-existing conditions. Certain conditions, exclusions and limitations apply as set out in the Evidence of Coverage and Confirmation of Coverage, which you will receive upon receipt of deposit. You will have ten days to review coverage and cancel your policy.

Following is a brief description of coverage:

- This protection plan will cover you for cancellation fees if you need to cancel because of death, injury or illness to you, your traveling companion or your immediate family member.
- Medical Evacuation: \$250,000
- Medical Expenses: \$25,000
- Baggage loss/delay: \$1,500/\$250

A valid passport is required. If you do not have a passport, you should apply for one immediately. Information on obtaining a passport will be provided upon receipt of deposit. Passports must be valid for six (6) months beyond your return tour date. If you now have a passport, please verify that its validity.

The itinerary as outlined is an indication of sequence and sites to be included in the tour program. However, the tour operator reserves the right to alter or change the itinerary and/or the sites included should it be deemed necessary due to local conditions, time restrictions, or other circumstances.

In the ever-changing world situation, MTS TRAVEL recommends personal monitoring of news about your destination. For the latest country information from the U.S. Dept. of State, please visit www.mtstravel.com and click "U.S. State Department Travel Warnings" in the middle of our home page.

Photographs: MTS TRAVEL reserves all rights to publish in printed media or the web (mtstravel.com) photographs taken during the tour. By participating in the tour you agree to grant permission to MTS TRAVEL to use photographs in which you may appear.

Guests with disabilities or dietary restrictions should inquire in advance about whether their needs can be accommodated.

**For Assistance with Air Travel...
If you would like assistance with
airline reservations, please contact
Paige Vogie, MTS TRAVEL at
paigev@mtstravel.com or call
800-418-2929, extension 81302.**

Responsibility

Menno Travel Service, Inc., D/B/A MTS TRAVEL, with its officers and staff act only as agents for the various companies whose accommodations are utilized. They assume no responsibility or liability in connection with the services of any train, vessel, carriage, automobile, airplane or other conveyance, which will be used either wholly or in part. Neither will they be responsible for any act, error, omission, or any injury, loss, accident, or any delays, which may be occasioned by reason of, defect in any vehicle or through neglect or default of any company or persons engaged in the conveying of passengers. The steamer, airplane services or that of any other conveyance, sickness, accident, weather, strikes, war, quarantine or other causes and all such losses or expenses must be borne by the passenger. Prices and schedules appearing in this brochure are based on current schedules and tariff rates and are subject to change without notice. The tour operator reserves the right to modify the itinerary where deemed necessary or caused by changes in air schedules. The airlines and/or other transportation companies concerned are not to be held responsible for any act, omission or event during the time passengers are not aboard their plane or conveyance. The passage contract in use by the airlines concerned, when issued, shall constitute the sole contract between the airlines and purchaser of tours and/or the passenger.

CST 2013363-40

Reservation Form
The Bavarian Pilgrimage Pathways
June 25–July 4, 2010
Hosted by The Reverend Matthew Corkern

To be assured of reservations, please complete and mail this registration form to MTS TRAVEL, 124 E. Main St., 4th Fl., Ephrata, PA 17522, along with your deposit of \$1000 per person.

Enclosed is my deposit check of \$_____ (\$1000 per person. Please make check payable to MTS TRAVEL.)

(Please Print)

Name 1 (as it appears on passport): _____

Name 2 (as it appears on passport): _____

Nickname: _____

Nickname: _____

Address: _____

City, State, Zip: _____

Phone: (evening) _____ (days) _____ Fax: _____

E-mail: _____

Room Type:

Twin/Double

Rooming With: _____

Single

Travel Protection Insurance (check one):

I/we wish to be covered by travel protection insurance. (Include \$390 per person with your deposit check. This premium is not refundable.)

I/we DO NOT wish to be covered by the travel protection insurance. Signature: _____

Credit Card Information:

Mastercard

Visa

Discover

American Express

Amount to be charged: Deposit \$_____ + Insurance \$_____ = Total Charge \$_____

Card Number: _____ **Exp. Date:** _____

Signature: _____

I have read the Tour Features and Conditions for this tour and agree to the terms listed therein.

Signature: _____